

ENDECK® Maintenance, Cleaning and Installation



Maintenance and Cleaning Guide



ENDECK®
PVC DECKING

Thank you for choosing Endeck decking. To ensure years of worry free enjoyment, please

read the maintenance, cleaning, and installation guide along with the limited warranty before starting your project. All Endeck deck boards are covered by a Limited Lifetime Residential Warranty. Additionally, the Forest series carries a 30 Year Limited Fade and Stain Residential Warranty. For the most current version of this guide and the limited warranties, please visit www.Endeck.com

Endeck capped cellular decking products are aesthetically pleasing, durable and easy to maintain. Like all other low maintenance products that are regularly exposed to the elements, your deck will require cleaning from time to time.

For light dirt and dust, you can sweep the dirt off the deck. Heavier trafficked areas or food stains may require a soft bristle brush (similar to what you use on your vehicle) and cleaner similar to Simple Green® diluted to the manufacturer's specification.

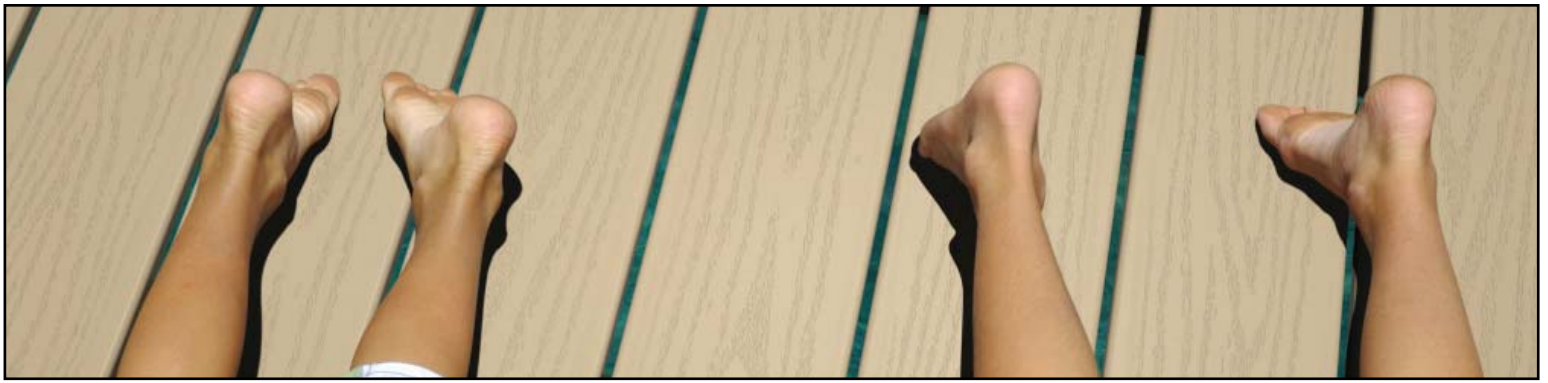
If stains are a little more stubborn, wipe down with one

cup of Simple Green or equivalent mixed with one gallon of water. The solution can be put in a spray bottle, sprayed on and scrubbed with a soft cloth or soft bristle brush. You can also mix 1/3 cup mild detergent such as Tide® or equivalent, 2/3 cup household cleaner such as Spic & Span® or equivalent with one gallon of water. Rinse all cleaners with water before they dry. Do not mix cleaning products. Always test cleaners in an inconspicuous area of your deck.

For more persistent stains, refer to the chart on page 2. Follow the precautionary instructions on the container label. Protect all vegetation from direct contact with the cleaning agent.

Clean your deck at least twice a year, particularly after heavy pollen events and in the fall to prevent the buildup of dirt and debris.

Ice and snow accumulated on the surface of your deck may create slippery conditions. Use snow or ice remover that will not damage concrete or kill grass. Do not use metal or metal tip shovels to remove snow or ice from your deck. When clearing snow, always shovel in a path parallel to the deck boards.



You should not need to use a pressure washer to clean your deck. If you chose to do so, use a wide fan tip, at low pressure (under 1200psi), and keep the tip at least 12” above the deck.

General:

The accumulation of excessive heat in excess of 250° F or reflected sunlight from external sources such as low-emissivity (Low-E) glass, sliding glass doors or energy efficient window products, can potentially damage Endeck decking and fascia. This is due to extreme temperatures exceeding normal sunlight. Damage can include accelerated weathering, warping, sagging, and increased expansion and contraction. If you have concerns about potential damage, it is recommended that you contact the manufacturer of those products.

Do NOT use rubber or vinyl products such as mats, planters, hoses, or children’s swimming pools which will maintain contact with the deck. Additives in these products can cause a reaction which may discolor the deck board. Use products that are marked “safe for use with vinyl.”

Certain chemicals may stain or alter the surface of Endeck such as sun block, insect repellent, oils, petroleum products, strong solvents and metallic rust.

Stain	Cleaners
Gum, Grass, Car Grease, Motor Oil, Rust, Top Soil	Fantastik®, Lestoil®, Lysol, Murphy® Oil Soap, Windex®
Crayon	Lestoil®
DAP (oil-based caulk) Felt-tip Pen	Fantastik®
Paint, Pencil, Tar	Brillo® Pad, Soft Scrub®

** Endeck does not endorse products or processes and makes no warranties for the products referenced herein. Reference to proprietary names is for illustrative purposes only and is not intended to imply that there are not equally effective alternatives.*

Always read product labels and refer to the manufacturer for compatibility with plastics prior to use.

Static build-up can occur with many products. Under the right combination of environmental and site conditions it is possible for it to temporarily occur with Endeck. With use of your deck over time, the effect will dissipate naturally. If it becomes a concern, the use of Simple Green® All Purpose Cleaner sprayed on the board and allowed to dry will act to temporarily reduce static.

Endeck boards are cooler to the touch than most wood alternative decking products in similar colors. All decking products will get hot in the sun, generally, the darker the color, the hotter it will feel.



ENDECK® Installation Guide

Thank you for choosing Endeck capped cellular PVC decking. Endeck must be installed in accordance with these installation guidelines, local building codes, and using best practice construction techniques for attaching wood or composite deck. For the most current version of this guide, please visit www.Endeck.com.

Getting Started:

Careful planning of the deck layout will result in a safer, better looking finished project. Joist location plays an important role in the safety of the deck itself. Extra framing may be needed to support heavy items such as hot tubs and outdoor kitchens. Endeck is compatible with a number of high quality railing systems.

Endeck is a double sided deck board so either side may be installed as the walking surface.

Endeck can be cut and attached with screws similar to standard quality wood products. When attaching Endeck boards to an existing joist structure, check to make sure all joists are level, straight, structurally sound, with no nails or screws protruding and the substructure meets current code requirements. Evaluate ledger connections, joists, beams, railings, and flashing.

Endeck recommends that your deck application be inspected by a licensed engineer, licensed deck contractor or local building code official prior to beginning installation.

Endeck is code approved as a walking surface and should not be used for other structural applications such as support posts, beams, columns, joists, or guard railing.

Building Codes:

For the most recent copy of Endeck's Code Compliance Research Report, see CCRR 0144 on www.Endeck.com.

Endeck has been independently tested by Intertek for compliance with the International Code Council Evaluation Service (ICC-ES) Acceptance Criteria AC174 and ASTM D7032.

Endeck is compliant with the following major model building codes:

2015 and 2012 International Building Code® (IBC)
2015 and 2012 International Residential Code® (IRC)



CODE COMPLIANCE
CCRR-0144

Intertek

Recommended Tools:

- Carbide saw blades
7-1/4" 60 teeth, 12" 100 teeth
Circular or Compound Miter saws
- Recommended screws or deck fasteners
- Safety glasses
- Corded or cordless driver or screw gun

Storage and Handling:

Do not drop units off delivery truck.
Always store decking on a level surface supported on battens.

Place battens at both ends and every 24" aligning battens vertically.

Keep decking covered with a light reflective material prior to installation.



Cut Ends & Finishing:

Visible cut ends can be painted. Due to the material composition, the cut end of your Endeck board will be different in color from the surface. If desired for aesthetic purposes, paint the ends of the deck board with a color matching, high quality paint similar to BEHR exterior enamel. If fascia boards are being used to cover the visible deck board edges, painting is not necessary.

BEHR ULTRA Color Match

FOREST SERIES

Cedar	634617392260
Chestnut	634617392293
Sequoia	634617391625
Slate	634617391621

WOODLAND SERIES

Ashwood	634617391627
Beechwood	634617391628
Olivewood	634617392259

Framing:

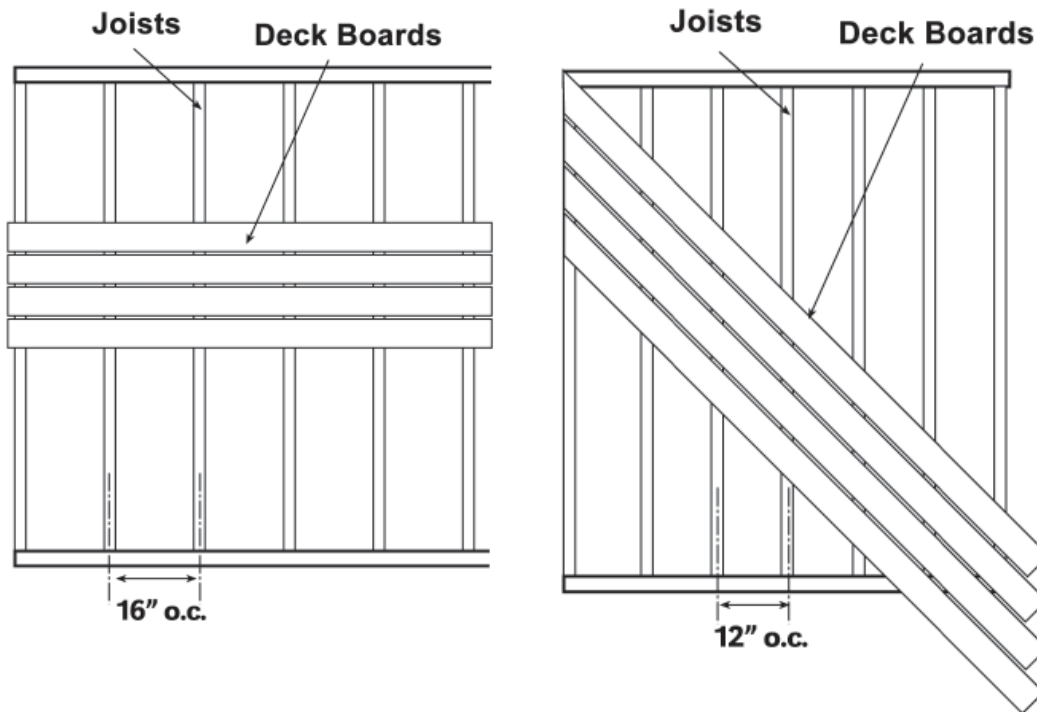
Endeck boards must span a minimum of (3) joists. When deck boards are installed end to end (butt joint), a double joist or blocking is required for fastening the deck boards to the joists.

- Install (2) deck fasteners at each joist and on both sides of butt joints.
- Do not exceed 16" on center joist spacing for applications with Endeck board's perpendicular to joists.
- Do not exceed 12" on center or a 45° angle for diagonal patterns.
- Do not exceed 12" on center for commercial applications.
- Decking material should not be used for the support of railing systems.

To reduce joist bounce and twist as well as minimize deck board expansion and contraction, add blocking between joists every 8' or less.

Slope the deck 1/16" per foot away from the home or structure to allow water run-off.

Deck substructure must be built in accordance with local building code and these guidelines.



Expansion & Contraction:

Endeck, like all materials, will expand and contract with changes in temperature. Expansion and contraction is most significant where extreme temperature change exists.

Always spread deck boards out prior to installation so that they may acclimate to temperatures at the time of installation.

Promptly install each Endeck board after cutting.

Layout and Color:

Endeck is designed with subtle color, texture and grain variation which will vary from board to board emulating the appearance of real wood. Prior to installation - especially if mixing bundles and lengths, it is important to lay out and arrange decking - mixing color, grain, and texture according to desired effect. If the color variation is not acceptable do not cut or install.

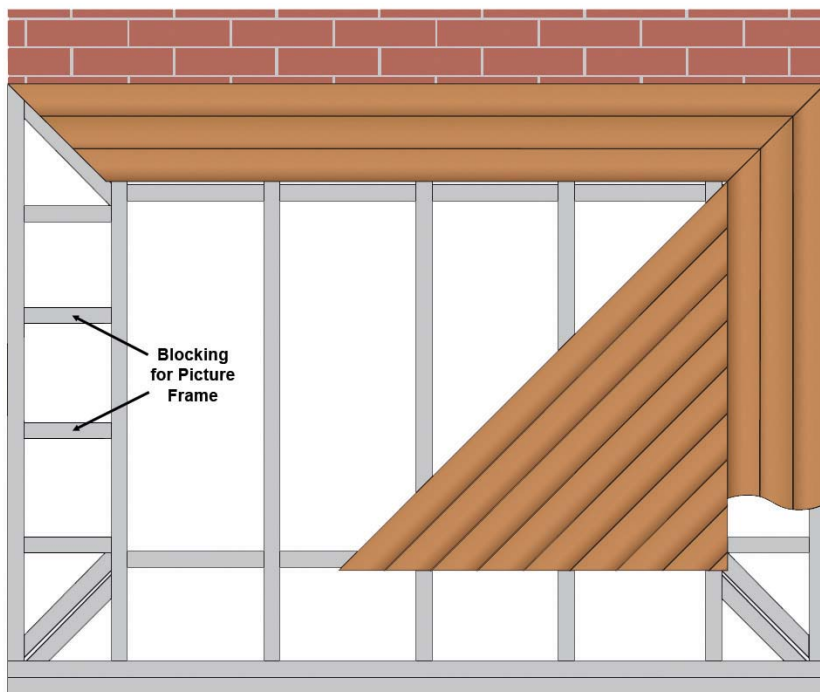
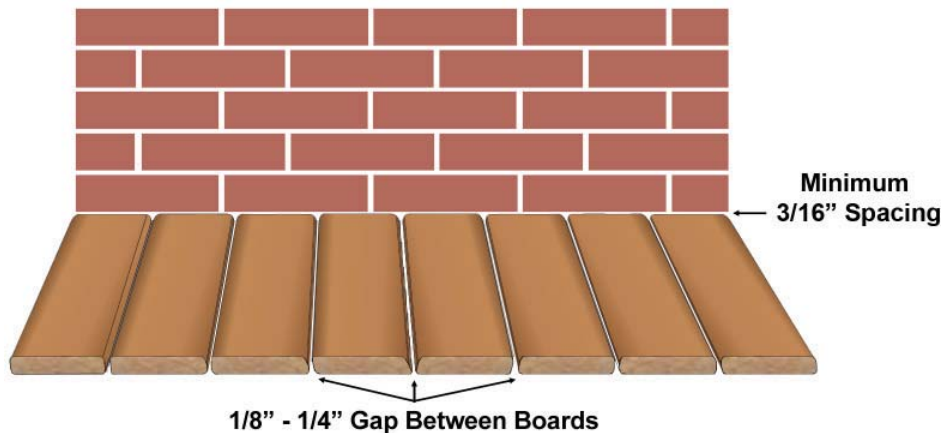


Board Spacing:

Use a spacer to create a gap of 1/8" to 1/4" between each deck boards to allow for proper drainage. Optional spacers are available at most lumberyards. Most hidden fastening systems set the board gap automatically.

Allow a minimum of 3/16" between the end of the deck board and any solid surface such as a wall or post.

Best practice when ambient temperature is above 32° F, fit deck boards end to end. When ambient temperature is below 32° F, allow 1/16" gap between board ends.



Picture Frame:

A picture frame detail can greatly enhance the appearance of your deck and cover board ends.

Installing support blocking flat will trap water and debris and may not meet code requirements. Install the picture frame support blocking vertically.

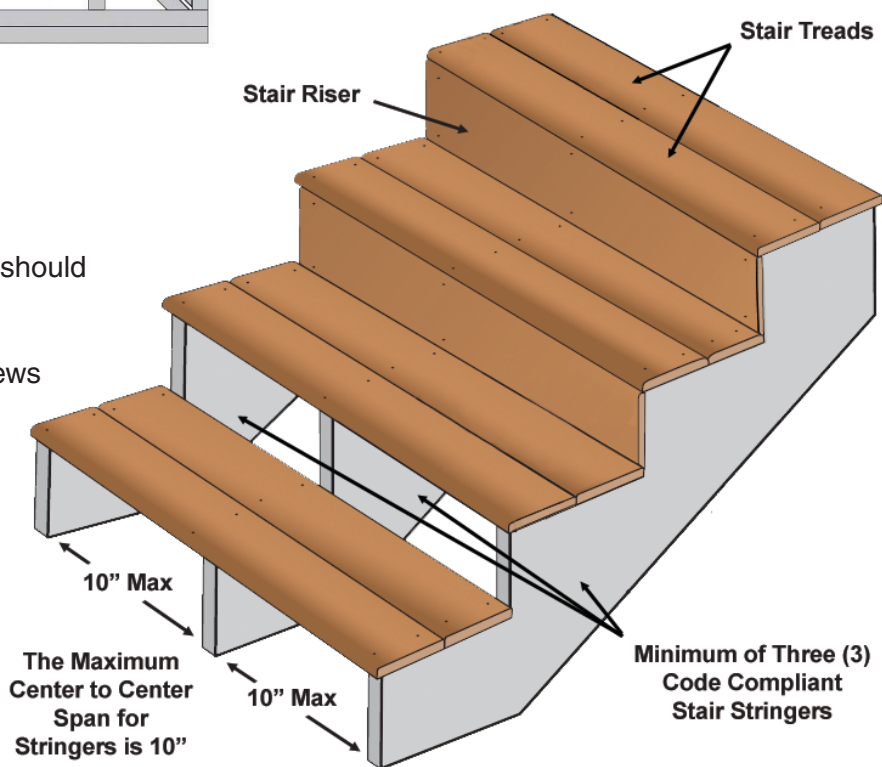
Gap boards a minimum of 1/8" between board ends and the picture frame board.

Stair Treads:

Stair stringers should be equally spaced and should not exceed 10" on center.

Stair treads should be attached with face screws such as Starborn™ Headcote®, Pro-Plug® System, or the Camo System.

Use matching fascia to cover stair risers.



Fasteners:

Fasteners must meet the requirements for the treated substructure and desired installation technique. Use Stainless Steel (SS) fasteners, 305 SS is acceptable for most applications. 316 SS is preferred in coastal areas where corrosion is more likely to occur. Follow fastener supplier guidelines. Consult the fastener manufacturer to ensure proper use and compatibility. Consult the [Endeck Fastener Guide](#) for more detail on fasteners and colors.

Face Fasteners:

Color-matched screws are available from Starborn™, Camo, Fastenmaster, Screw Products and Simpson Strongtie.

- Minimum screw size is #8 x 2-1/2" for face screw applications.
- Screws must be completely screwed down (2 screws per joist) into each board prior to moving on to the next board.
- Screws must be installed 90° to the deck surface.
- Screws must be installed a minimum of 3/4" from the end and edge of the board
- For a professional look, line up fasteners using a string or white chalk line.
- Do not use high permanence chalk as it may discolor your deck.

Recommended Face Fasteners for Endeck® Deck Boards	
Starborn	Cap-Tor® xd Headcote® - Stainless Steel #10 x 2-1/2"
Camo	Composite Screw - Stainless Steel #10 x 2-1/2"
Fastenmaster*	TrimTop® - Stainless Steel #8 x 2-1/2"
Screw Products	C-Deck SSCD234 - Stainless Steel #10 x 2-3/4"
Simpson Strongtie	Deck-Drive™ DCU Composite Screw - Stainless Steel #10 x 2-3/4"



Hidden Fastener Options:

There are a number of hidden fastener options for Endeck. Follow the manufacturer's installation guidelines and coastal area recommendations.

Recommended Hidden Fasteners for Endeck® Deck Boards				Board Gap
Starborn	Pro-Plug®	Plug & #10 x 2-1/2" stainless steel screw	Solid edge board	variable min. 1/8"
CAMO*	Marksman Pro	#7 x 2-3/8" stainless steel screw		1/8" or 3/16"
Fastenmaster*	Tiger Claw® TC-3S	stainless steel clip		3/16"
HIDfast*	HIDfast HF3	stainless steel fastener		3/16"

* Fasteners are included in CCRR-0144. All others are recommended by the fastener manufacturer for use with Endeck.

Ventilation and Water Runoff:

To prevent moisture and heat buildup, unobstructed air flow is required below the deck. Flat areas where standing water may gather should be addressed by grading or improved drainage. Roof runoff, downspouts, and splash guards must be directed away from the deck surface and substructure.

Fascia:

Endeck fascia and deck boards both may be used as fascia. The fascia board should be fully supported by a sub-fascia made of lumber. Apply construction adhesive and fasten with 3 fasteners every 16" on-center. Work from one end to the other keeping the board flat during installation.

The same method may also be used for facing stair risers. A sub-fascia is not required.

